



INFORCE
PROJECT

From the moment of founding in 2006 Inforceproject delivers a high level of services in the field of structural engineering. We pay a lot of attention to the needs of the Client, we design modern cost-effective and reliable buildings. Our vision is providing the Architect an opportunity to entirely realize his ideas.

Inforceproject offers wide range services: from consulting at initial design stages till a final design stages and building site supervision. Our experience and competence help the Client to make the design more efficient, to pull together the architectural approach and the final project realization using a modern construction technology. Inforceproject has experience in structural design according to European standards (Eurocode) and US standards (ACI, AISC, ASCE). Our projects are situated in East Europe (Russia, Belorussia), in Middle Asia (Uzbekistan) and in European Union (Slovenia).

Our high-level structural engineer's team completed a number of unique projects, such as 462 m skyscraper Lakhta Center in Saint-Petersburg, the highest building in Europe, IQ-quarter in Moscow City, stadiums for FIFA Championship 2018 in Saint-Petersburg, Samara and Yekaterinburg, Ice Palace Bolshoy for Winter Olympic 2014 in Sochi, HUMO Arena in Tashkent. Our clients are leading architectural companies from Russia (Gorproject, PI Arena, Mezonproject, ABD

Architects), USA (AECOM), United Kingdom (RMJM) and Slovenia (Ofis Arhitekti).

Our head office is situated in Moscow, Russia. In 2018 a new office was opened in Ljubljana, Slovenia, marking a new stage of our company development and entrance to EU market. Inforceproject invests in high-efficient equipment and software. Our engineers regularly train in modern methods of structural design and structural analysis, write scientific and technical papers, take part in specialized conferences. Our employees have sense of pride working for Inforceproject; they feel themselves here like at home.



PARTNERS

Alexey
Shakhvorostov
managing partner



Andrey
Ivashchenko
managing partner



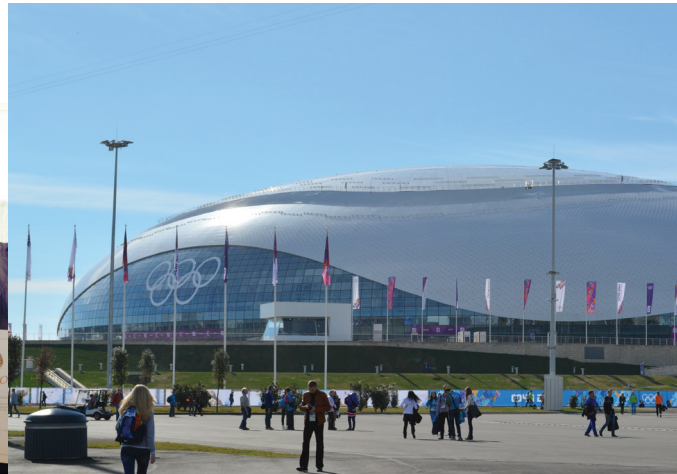
Alexander
Timofeevich
partner



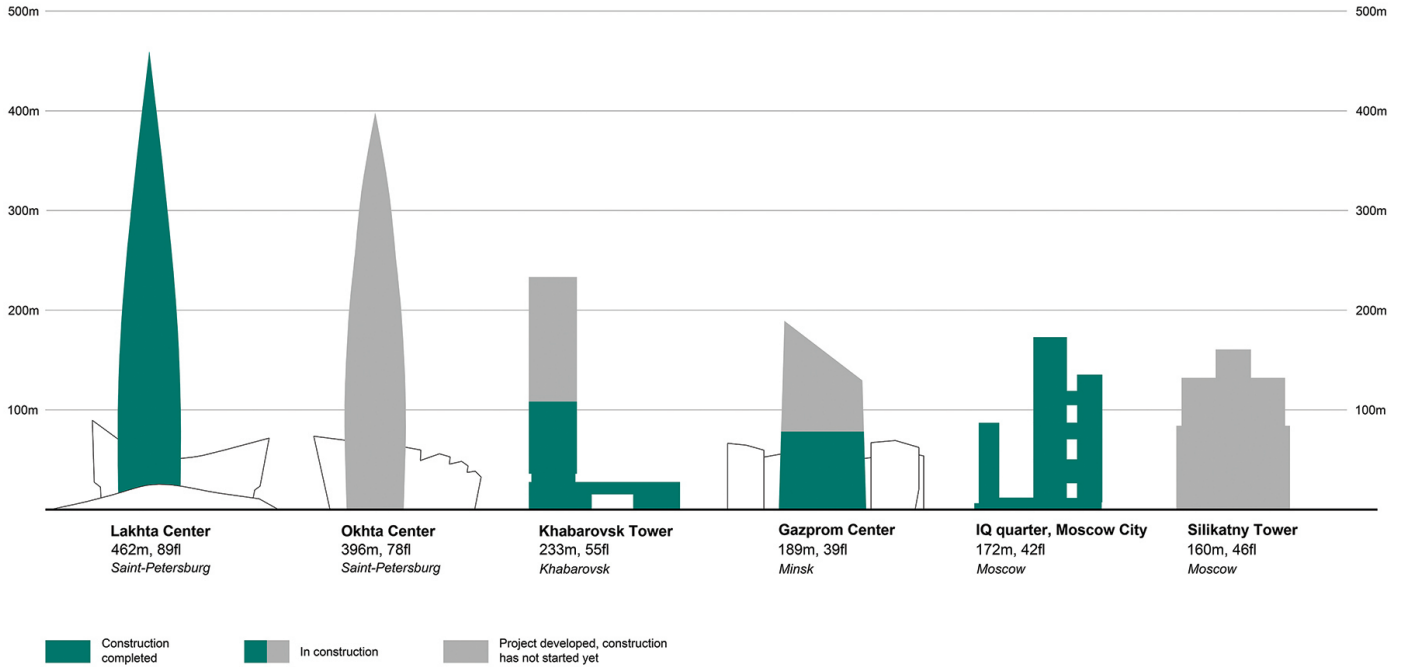
Dmitrii
Zelenov
partner



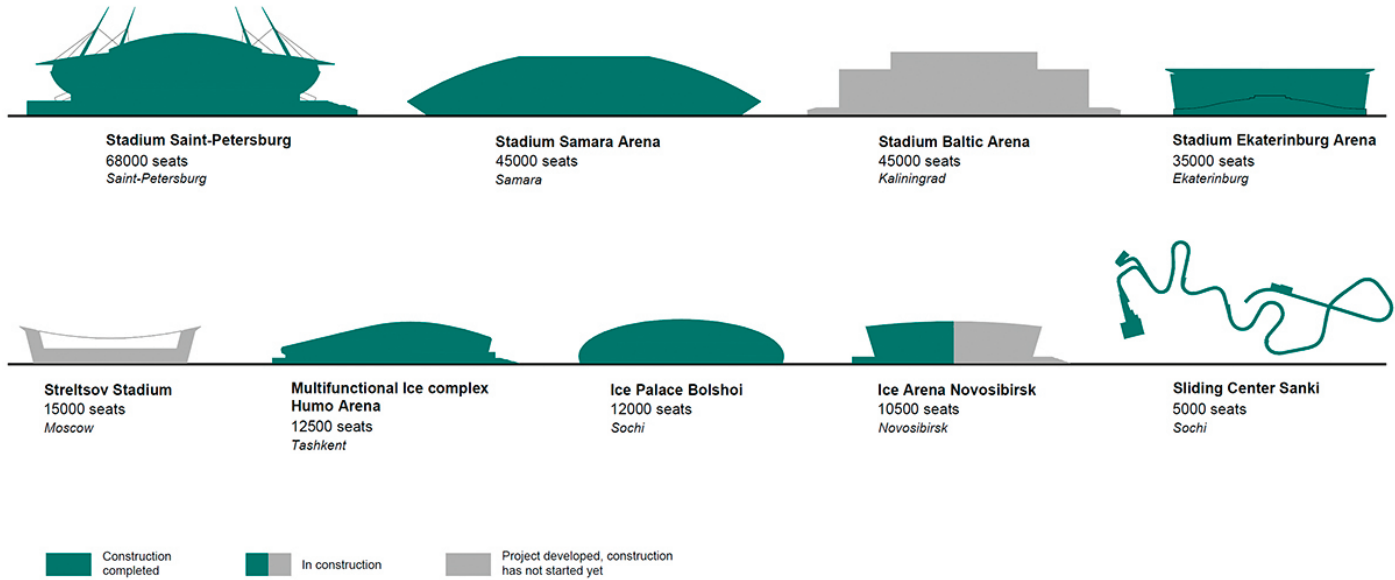
Mikhail
Desyatkin
partner



TALL BUILDINGS PROJECTS



SPORTS VENUES AND STADIUMS PROJECTS





LAKHTA CENTER ST. PETERSBURG

Status: Finished

Floors: 89

Height: 462 m

Architect: RMJM, Gorproject

Our service: Schematic Design , Detailed Documentation,
Construction Documentation, Construction Supervision

Work period: 09.2011 – 03.2018



IQ QUARTER MOSCOW CITY

Статус объекта: Построен

Status: Finished

Floors: 42, 33, 21

Height: 172 m

Architect: NBBJ, Gorproject

Our service: Detailed Documentation,
Construction Documentation, Construction Supervision

Work period: 02.2012 – 12.2014



GAZPROM CENTER MINSK, BELORUSSIA

Status: In construction

Floors: 35

Height: 189 m

Architect: NBBJ, AECOM

Our service: Detailed Documentation, Construction Documentation

Work period: 02.2016 – 12.2018



STADIUM SAINT-PETERSBURG

Status: Finished

Capacity: 68 000

Architect: Kisho Kurokawa, Mosproject-4

Our service: Detailed Documentation,
Construction Documentation (level 14.000–42.000)

Work period: 08.2010 – 10.2012



STADIUM SAMARA ARENA

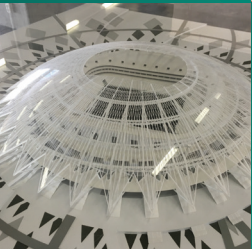
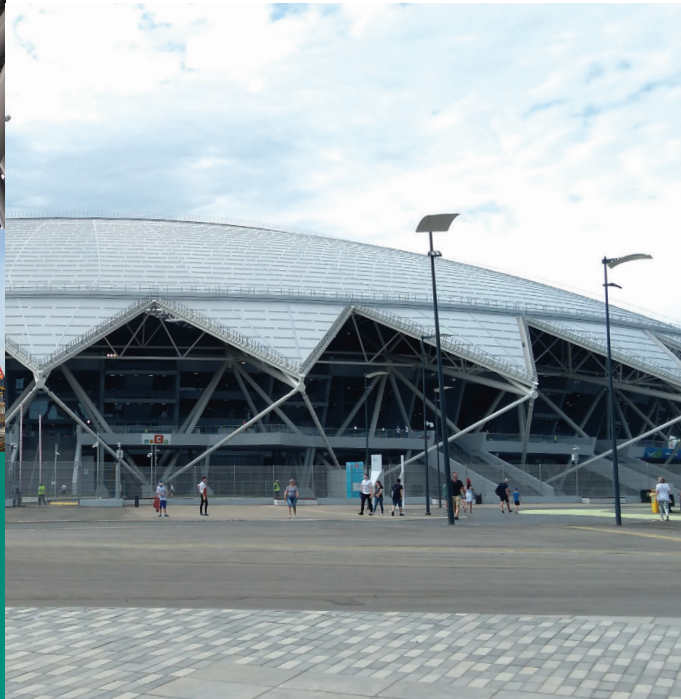
Status: Finished

Capacity: 45 000

Architect: PI Arena

Our service: Schematic Design, Detailed Documentation,
Construction Documentation (excl. roof structure), Construction Supervision

Work period: 09.2013 – 02.2018



STADIUM EKATERINBURG ARENA

Status: Finished

Capacity: 35 000

Architect: PI Arena

Our service: Schematic Design,
Detailed Documentation (excl. roof structure)

Work period: 11.2014 – 02.2018



ICE PALACE BOLSHOY SOCHI

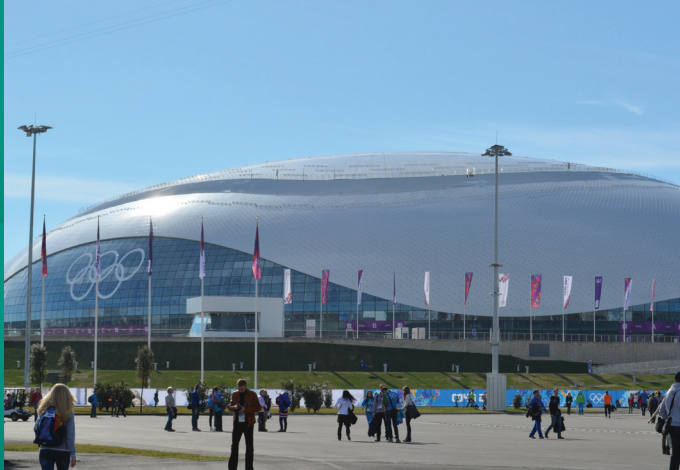
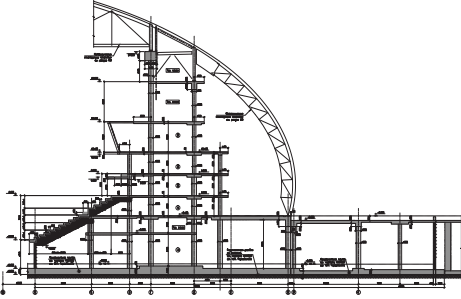
Status: Finished

Capacity: 12 000

Architect: NPO Mostovik

Our service: Detailed Documentation,
Construction Documentation, Construction Supervision

Work period: 03.2009 – 05.2011



SLIDING CENTER SANKI SOCHI

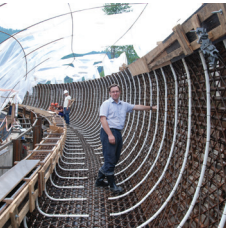
Status: Finished

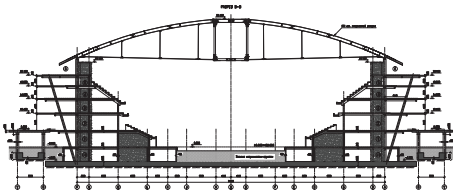
Architect: NPO Mostovik

Trek length: 1 823 m

Our service: Detailed Documentation,
Construction Documentation, Construction Supervision

Work period: 04.2010 – 10.2012





HUMO ARENA TASHKENT, UZBEKISTAN

Status: Finished

Architect: Heerim Architects, PI Arena

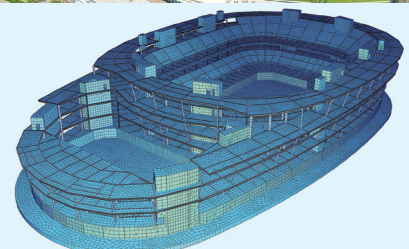
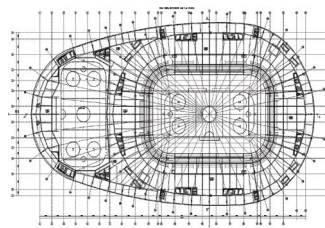
Capacity: 12 500

Height: 40 m

Area: 82 250 m²

Our service: Schematic Design Detailed Documentation,
Construction Documentation (excl. roof structure)

Work period: 07.2017 – 09.2018



ICE ARENA NOVOSIBIRSK

Status: In construction

Architect: PI Arena

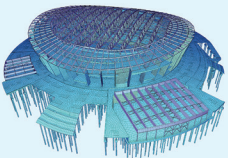
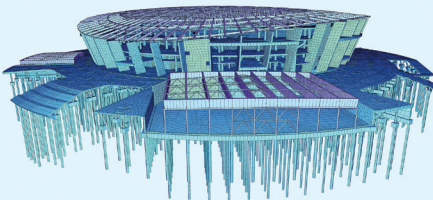
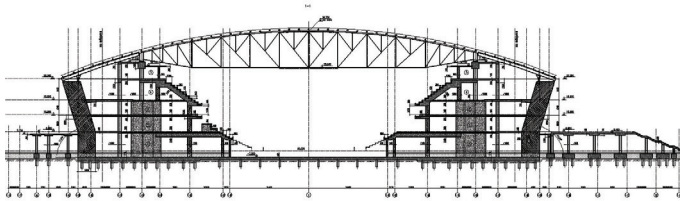
Capacity: 10 500

Height: 38 m

Span: 103 m

Our service: Schematic Design,
Detailed Documentation, Construction Documentation

Work period: 03.2018 – today



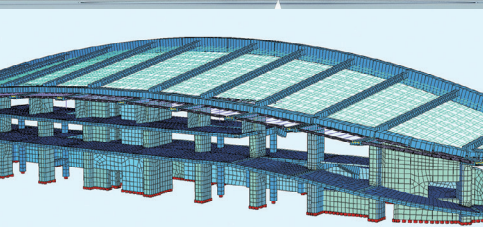
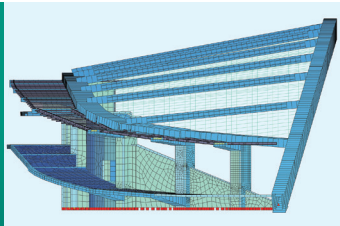
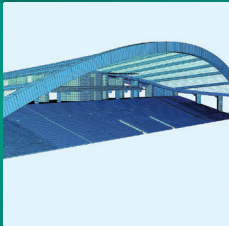
STADIUM LJUDSKI VRT MARIBOR, SLOVENIA

Status: In construction

Architect: Ofis Arhitekti

Our service: West tribune reconstruction, Schematic Design,
Detailed Documentation, Construction Documentation

Work period: 12.2017 – 08.2018



ŠIŠKA REZIDENCE LJUBLJANA, SLOVENIA

Status: In construction

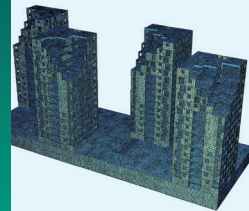
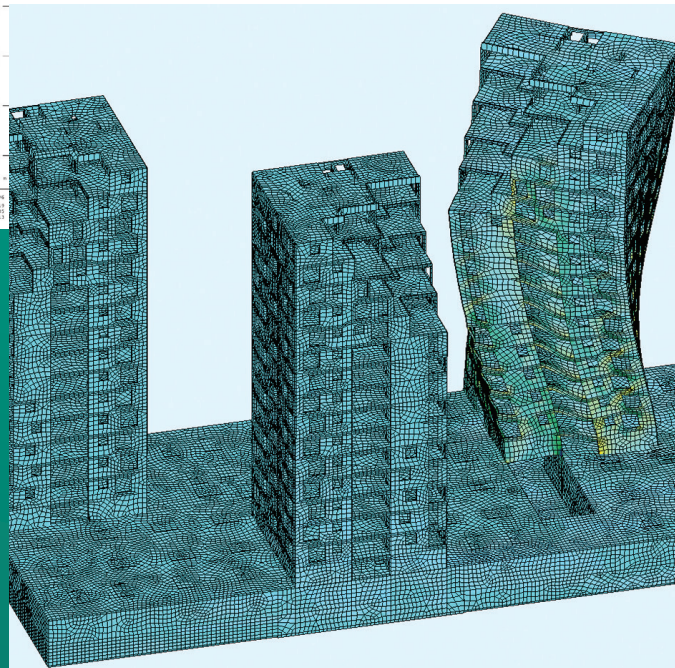
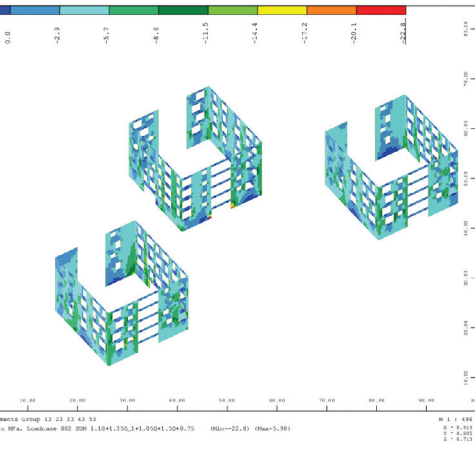
Floors: 48,5 m

Area: 24 000 m²

Architect: Ofis Arhitekti

Our service: Schematic Design,
Detailed Documentation, Construction Documentation

Work period: 01.2018 – today



VDNH PAVILION MOSCOW

Status: In construction

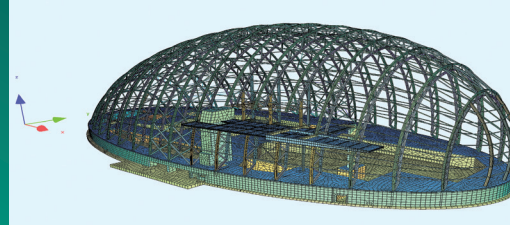
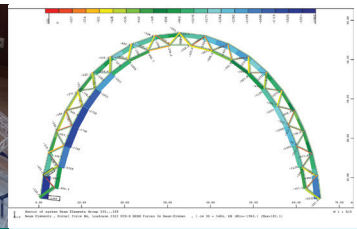
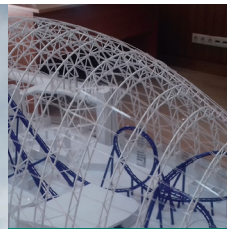
Architect: Kleinewelt architekten, Astarta

Height: 45 m

Span: 66 m

Our service: Schematic Design,
Detailed Documentation, Construction Documentation

Work period: 07.2018 – today



HYATT BURNY HOTEL VLADIVOSTOK

Status: In construction

Floors: 16

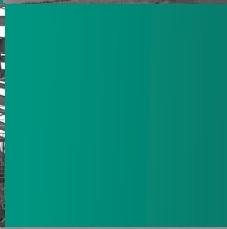
Height: 57 m

Architect: RMJM

Our service: Schematic Design, Detailed Documentation

Work period: 12.2009 – 11.2010





Contact:

Inforceproject
address: 115280 Moscow,
Leninskaya Sloboda 19

phone: +7 4952691959
e-mail: mail@inforceproject.ru
web: www.inforceproject.ru

Office in Slovenia
address: Vurnikova 2, 1000 Ljubljana
phone: +386 40847782

